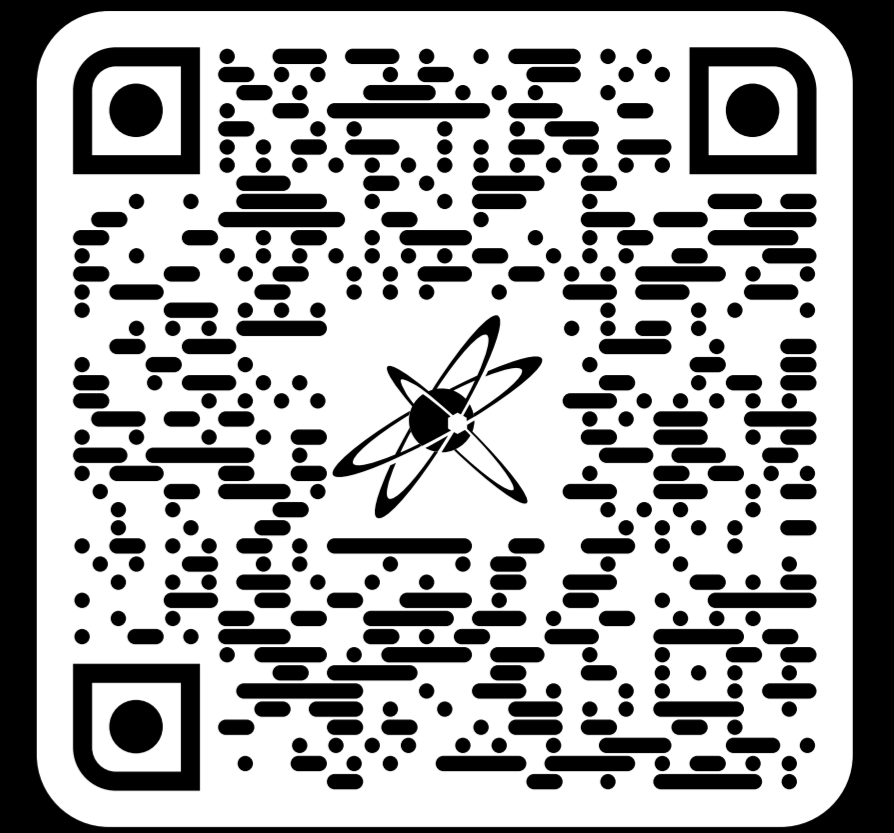


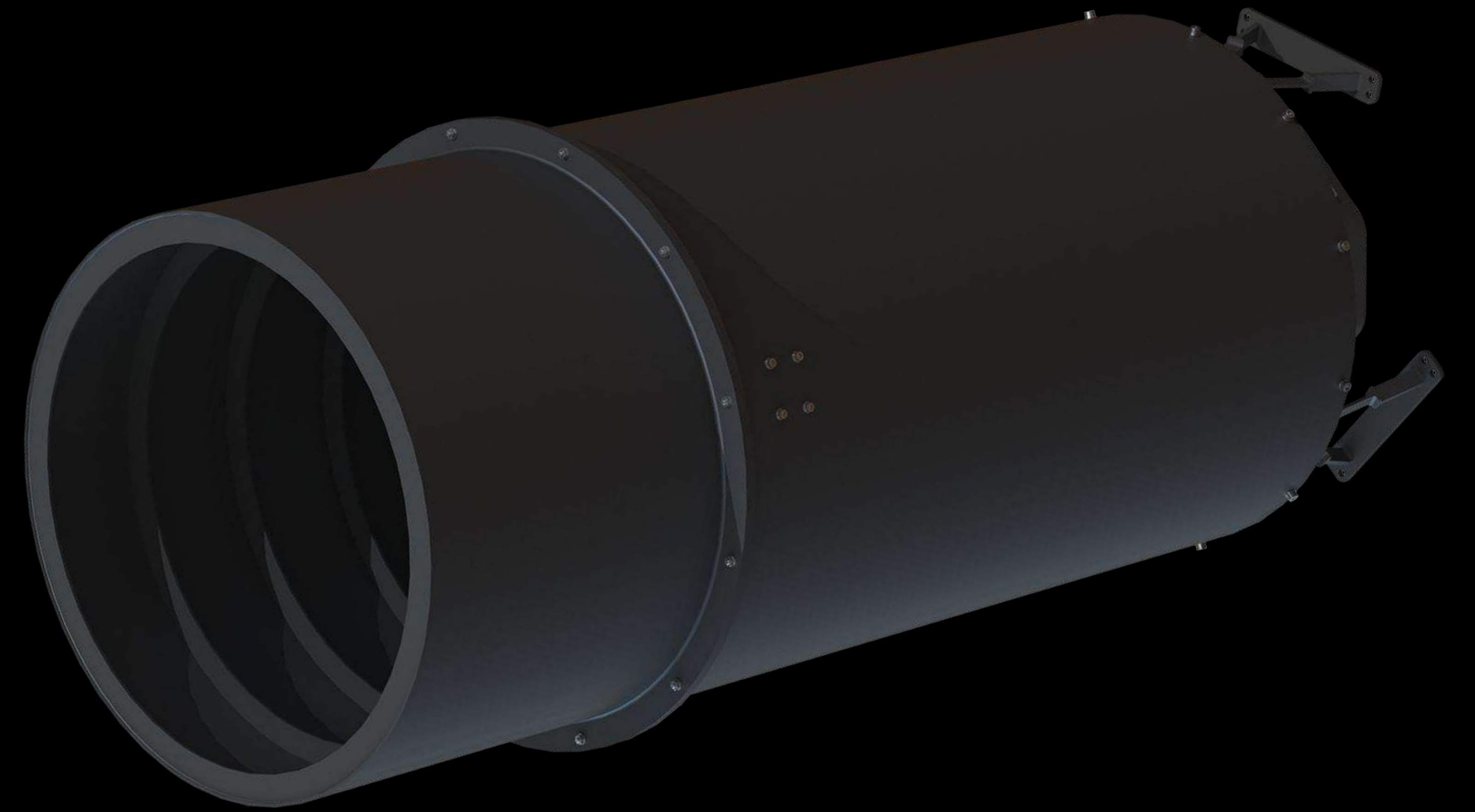
**DRAGONFLY**  
a e r o s p a c e

+27 (21) 206 6556

info@dragonflyaerospace.com



# RAPTOR IMAGER



**Spatial Resolution (GSD) at 500 km**

**Swath at 500 km**

**Mass (Including electronics)**

**Spectral Bands**

**Imager Type**

**Satellite Bus Size**

**Physical Size**

**Data Format**

**Mass Storage**

**Compression**

**Data Interface**

**TMTC Interface**

**Power Usage**

**Power Supply**

**Operating Temperature**

**Survival Temperature**

**TRL**

PAN 0.5m / PAN 0.36\* / MS 2m

8 km

55 kg

6 x MS plus 2x PAN

Push broom

100–150kg

635 mm (D) x 1450 mm (L) plus electronics

10-bit or 12-bit

Optional

RAW or J2K lossless or lossy

Multi gigabit transceiver, LVDS

CAN, RS485

Imaging mode <45W, Readout mode <25 W

28V DC

+10°C to +30°C

-20°C to +55°C

5

*\* with super-resolution processing*

## ABOUT DRAGONFLY AEROSPACE

Dragonfly Aerospace is an industry leader in world-class, high-performance imaging satellites and payloads. Our turnkey solutions for imaging satellites gets these strategic assets operational on orbit with the minimum time, cost and risk. Our imaging solutions enable our customers to create persistent views of the Earth in a wide range of spectrums for unprecedented business intelligence that helps improve the lives of people around the world.